

LUMIERE-ELSTREE.CO.UK
5 ELSTREE WAY WD6 1SF

LUMIÈRE

**A COLLECTION OF STUNNING
REFURBISHED BUILDINGS**

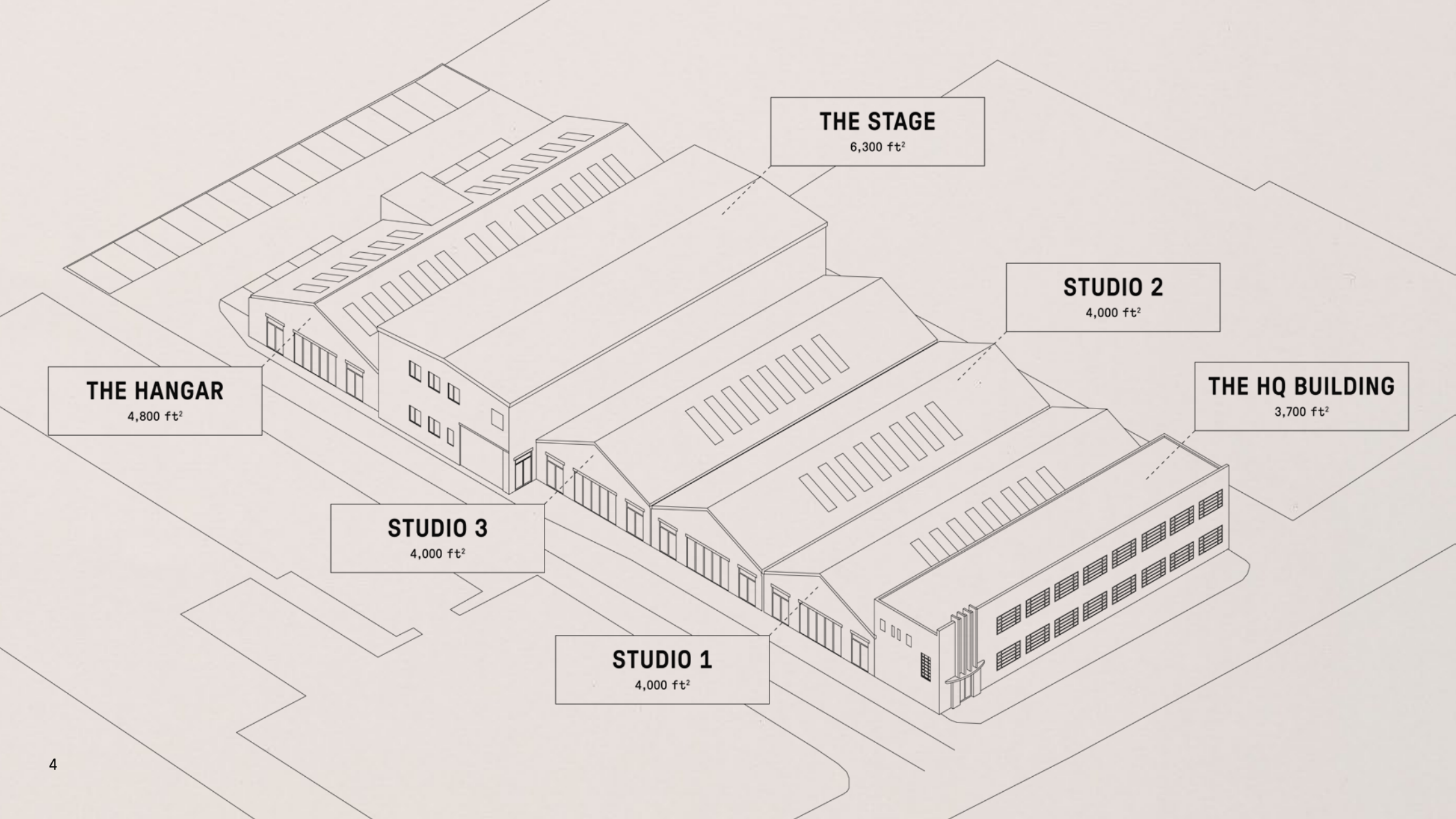
**AVAILABLE TO RENT INDIVIDUALLY
FROM 4,000 TO 27,000 ft²**

**SIX DISTINCTIVE, INDIVIDUAL,
SELF-CONTAINED COMMERCIAL BUILDINGS
AVAILABLE TO LEASE FROM EARLY 2025**

**THOUGHTFULLY RENOVATED SPACES WITH
POTENTIAL FOR A VARIETY OF COMMERCIAL USES**

**LOCATED IN ELSTREE - THE HEART OF THE THRIVING
MEDIA CENTRE ONLY 200m FROM SKY STUDIOS**

**CLOSE TO M1 AND M25 FOR RAPID CAR ACCESS
TO LUTON ^(30 MINUTES) AND HEATHROW ^(45 MINUTES)**



THE HANGAR

4,800 ft²

THE STAGE

6,300 ft²

STUDIO 2

4,000 ft²

THE HQ BUILDING

3,700 ft²

STUDIO 3

4,000 ft²

STUDIO 1

4,000 ft²

THE SINGLE-STOREY INDUSTRIAL-STYLE BUILDINGS HAVE BEEN OPENED UP TO REVEAL VOLUMINOUS COLUMN-FREE SPACES WITH FLOOR PLATES BETWEEN 4,000 ft² AND 6,300 ft² WHICH COULD BE COMBINED IN VARIOUS PERMUTATIONS TO OVER 20,000 ft²



CGI IMAGE: STUDIO 1

**THE HQ BUILDING WILL BE FITTED
TO CAT A+ SPECIFICATIONS AND
IS OFFERED FULLY FURNISHED
AND READY TO MOVE INTO**



CGI IMAGE: FIRST FLOOR, THE HQ BUILDING

THE HQ BUILDING
3,700 ft²

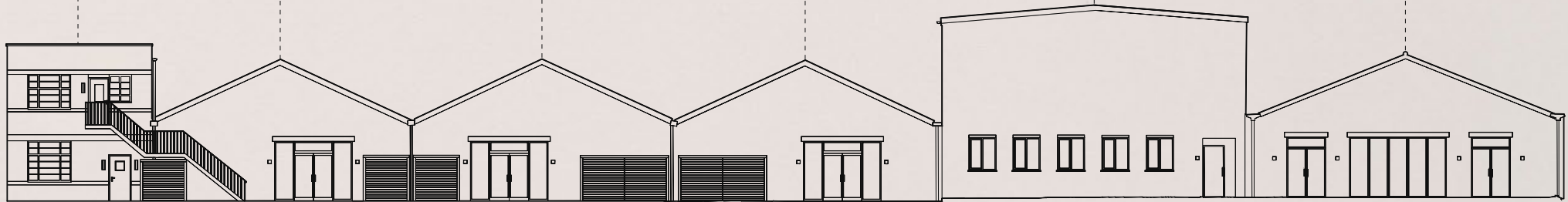
STUDIO 1
4,000 ft²

STUDIO 2
4,000 ft²

STUDIO 3
4,000 ft²

THE STAGE
6,300 ft²

THE HANGAR
4,800 ft²



THE HQ BUILDING

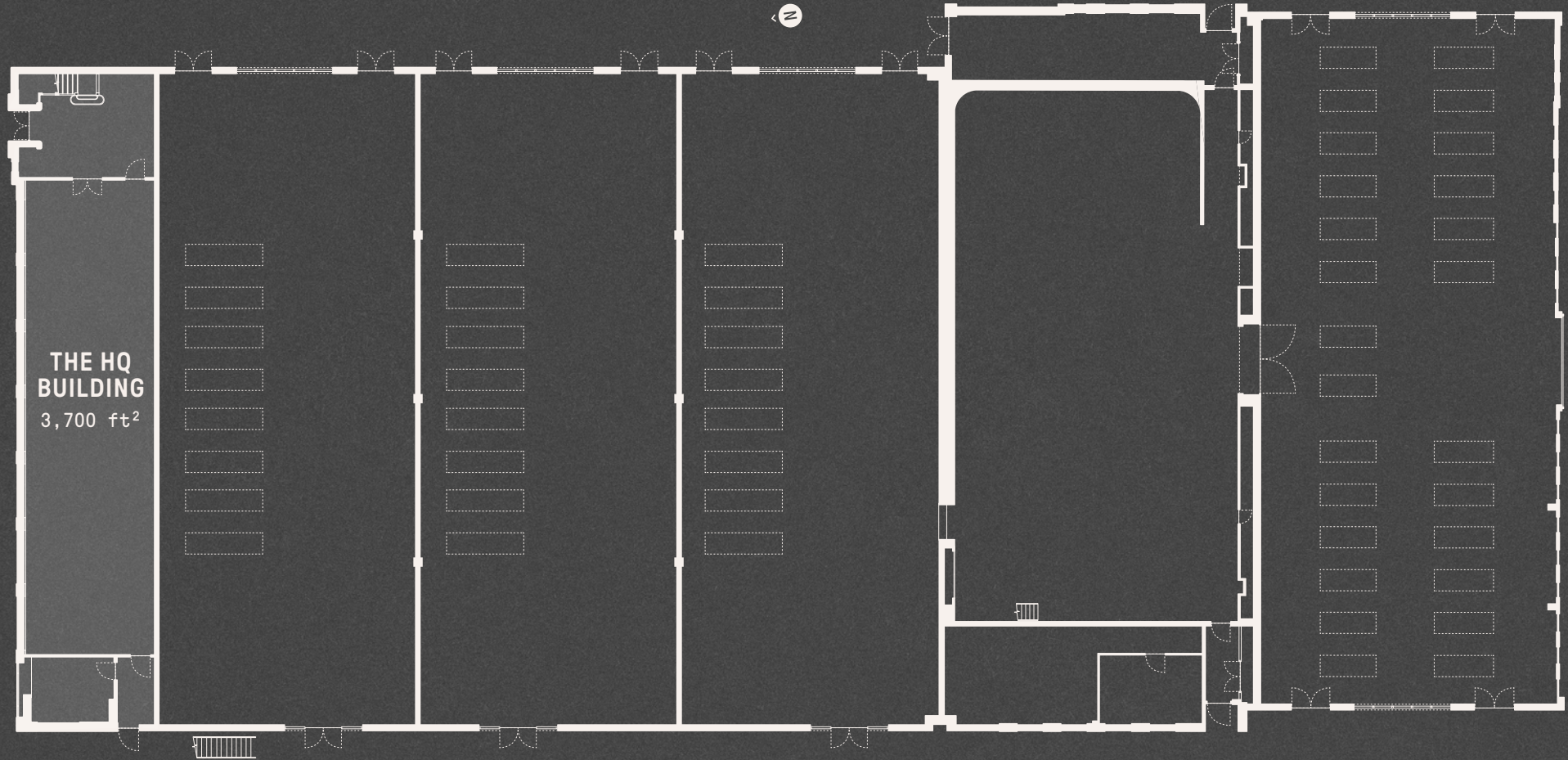
This stunning two-storey self-contained building is ideal for a business headquarters or office space. The listed Art Deco façade overlooking Elstree Way makes an impressive statement with a double height entrance foyer and bright, extensive Crittall windows. Fully fitted to CAT A+ specification THE HQ BUILDING will be available as a 'turnkey' ready to move into immediately.

SPECIFICATION

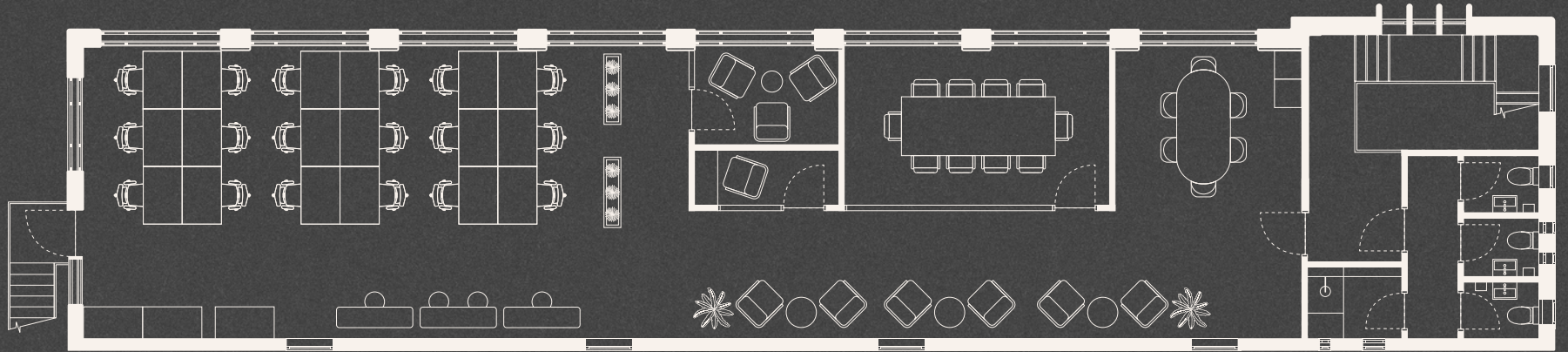
- 3,700 ft² internal area
- Up to 3m ceiling height
- Lobby-like entrance space
- Existing steelwork and Crittall windows fully refurbished
- Original external brickwork cleaned and repointed
- New slimline secondary glazing for thermal and acoustic efficiency

CAT A+ FIT-OUT

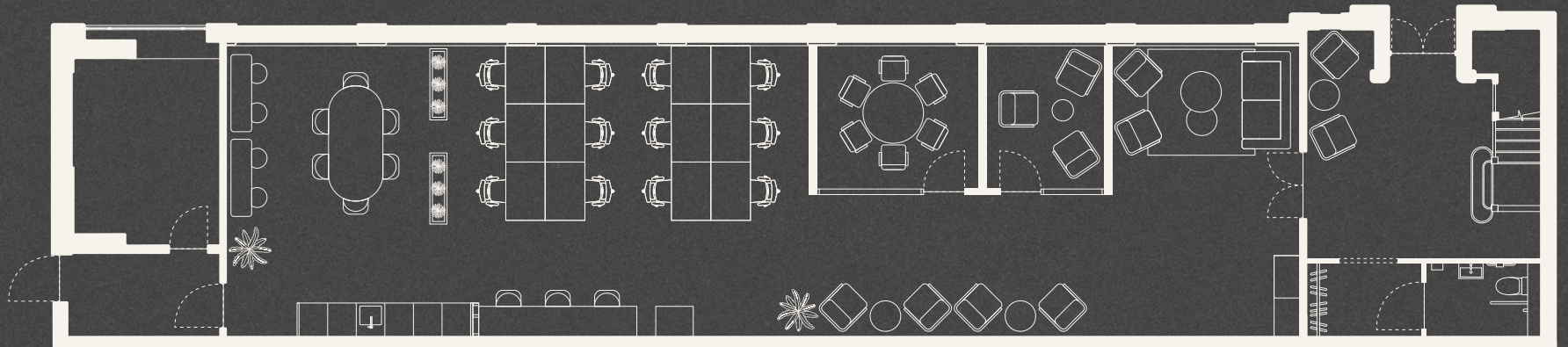
- Touchdown office, formal office, and meeting room
- Kitchenette, WCs, accessible WC, and shower
- High-performance VRF units for heating and cooling
- New LED light fittings
- Fully furnished, ready to go



THE HQ BUILDING
FIRST FLOOR



THE HQ BUILDING
GROUND FLOOR

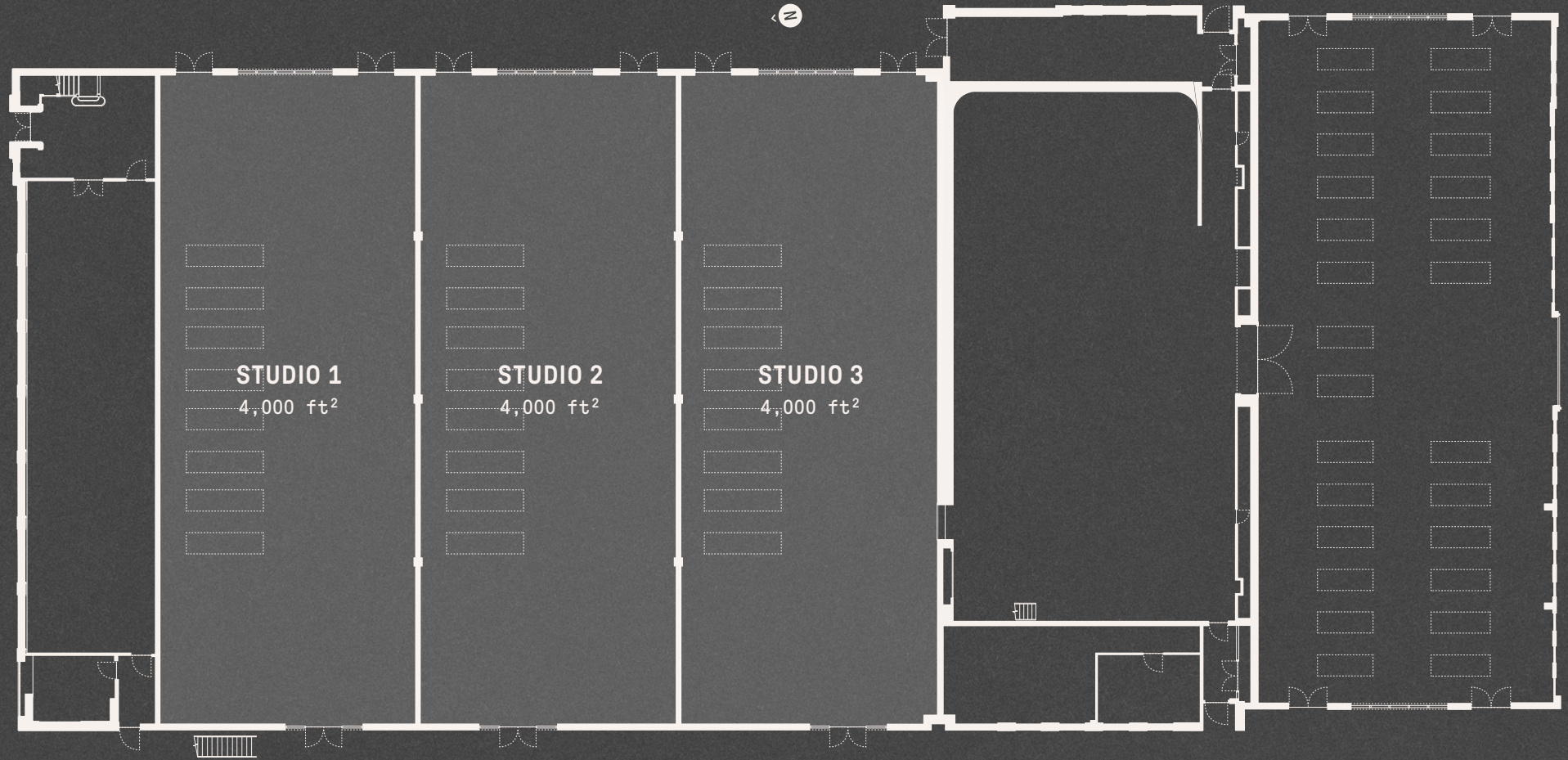


STUDIOS 1, 2 & 3

The three adjoining single-storey studio buildings are available individually or could combine in different permutations.

SPECIFICATION

- Each have floor plates of 4,000 ft² with iconic pitched roofs with roof lights, offering excellent ceiling heights of 6.2m at the apex
- Internal walls lined with insulated plasterboard
- New high-performance insulated roof
- New high-performance thermally broken aluminium door window system
- Latex levelled flooring
- Finished to Shell standard with service heads ready for connections
- Fit-out by discussion (dependent on use)



THE STAGE

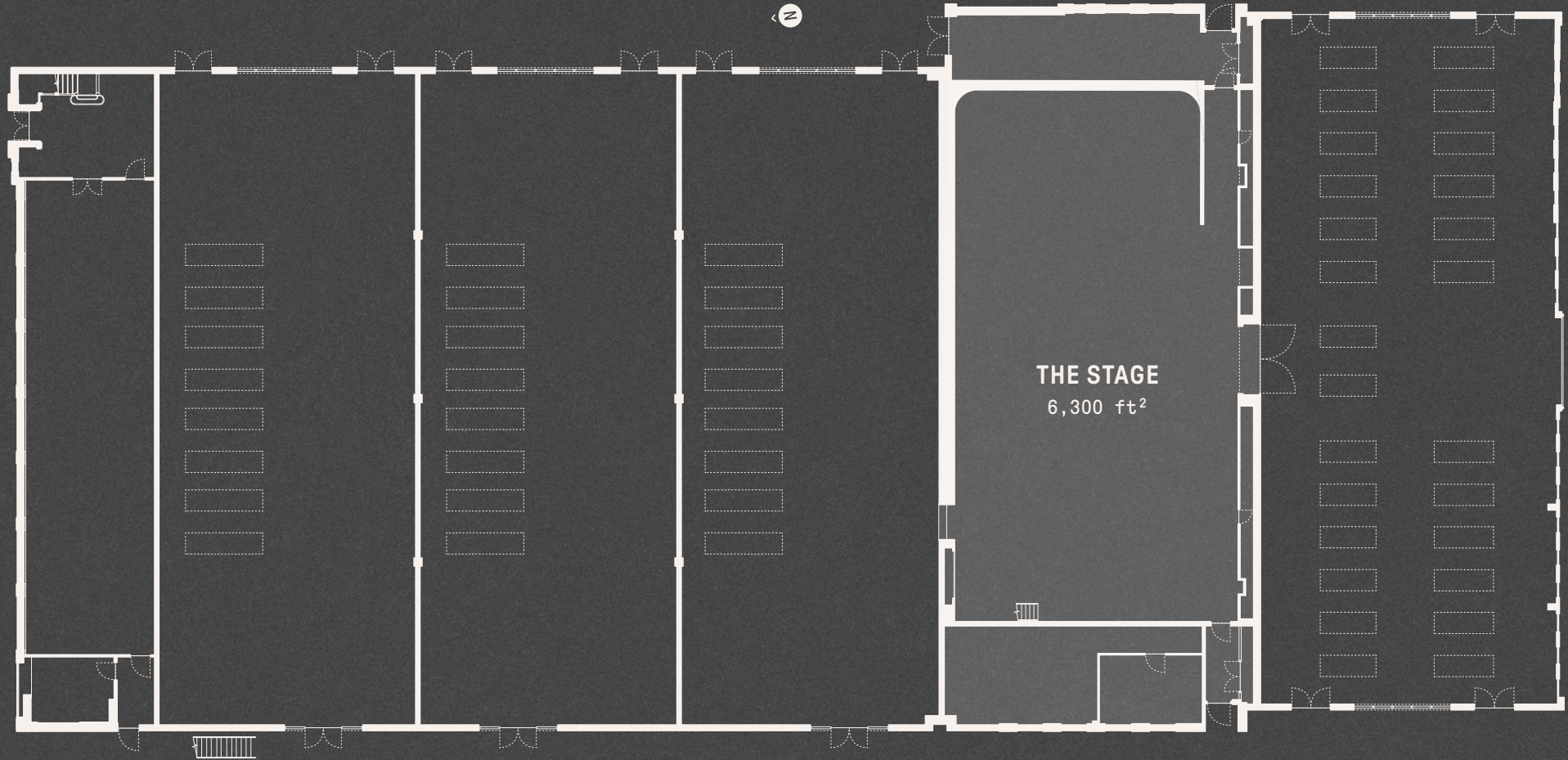
THE STAGE was previously used for film and sound production, boasting a vast floor plate, 8m high ceilings and mezzanine. Also includes infinity screen, lighting rig, dressing rooms, kitchen, toilets and reception. Direct vehicle access is available through its adjacent space, THE HANGAR. The building works in conjunction with THE HANGAR but is also available to lease individually.

SPECIFICATION

- 6,300 ft² internal area
- 7.8m ceiling height at the highest point
- Acoustically high performing double skin walls
- New high-performance insulated roofs
- Original external brickwork cleaned and repointed
- Cyclorama/infinity wall
- Mezzanine storage area

CAT A FIT-OUT

- High-performance VRF units for heating and cooling
- Dedicated reception area in lobby
- Kitchenette, WCs, showers, and dressing rooms

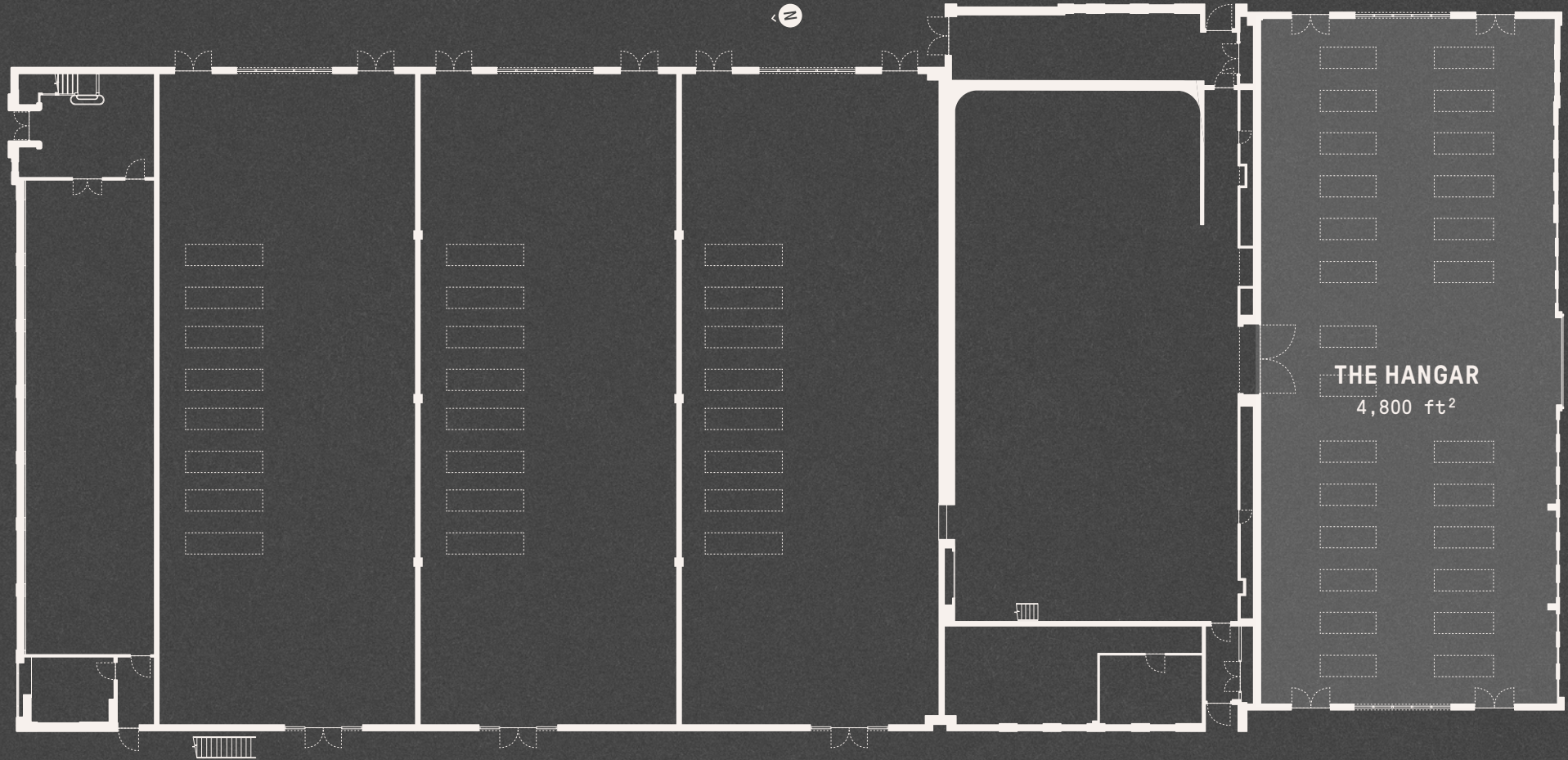


THE HANGAR

THE HANGAR is a lofty, bright and versatile building with brutalist-style concrete architecture. THE HANGAR features a double height roller shutter which provides vehicular access to THE STAGE building. The building works optimally as a supporting space to THE STAGE but is also available to lease individually.

SPECIFICATION

- 4,800 ft² internal area
- 6.2m ceiling height at the highest point
- North and south-facing roof lights
- New high-performance insulated roof
- New high-performance, thermally broken aluminium door/window systems
- Original external brickwork cleaned and repointed
- Finished to Shell standard with service heads ready for connections
- Fit-out by discussion (dependent on use)



**CONNECTED
LOCATION**

LUMIÈRE is situated on Elstree Way, between the A1 and Borehamwood town centre, within the London commuter belt. It's a strategic position, allowing for swift connections to the capital and the rest of the country.

**LONDON RAIL
CONNECTIONS**

A 5-minute drive will take you to Elstree & Borehamwood Station, where the regular Thameslink trains run to St Pancras International, the Eurostar terminal, in 30 minutes. For Northern Line Underground services, Edgware station is only a 10-minute drive.

**NATIONAL &
INTERNATIONAL
TRAVEL**

Motorway access for longer car journeys couldn't be better, with the M1 and M25 around 5 minutes away. You can be in the West End in under an hour and reach Heathrow and Luton airports in less than 45 minutes.

**SITE
ADDRESS**

LUMIÈRE
5 ELSTREE WAY
BOREHAMWOOD
LONDON
WD6 1SF



ELSTREE & BOREHAMWOOD STATION

ELSTREE STUDIOS

LUMIÈRE

SKY STUDIOS ELSTREE

SHORT DRIVE TO M1

ACCESS TO THE A1



LUMIÈRE

Borehamwood

Watford

Barnet

Enfield

High Beech

Loughton

Bushey

Elstree

ARKLEY
BARNET GATE

COCKFOSTERS

PONDERS END

DEBDEN GREEN

Abridge

Park

WHETSTONE
OAKLEIGH PARK

OSIDGE

EDMONTON

CHINGFORD

Buckhurst Hill

Chigwell

Lambourne End

Stanmore

Edgware

NORTH FINCHLEY

ARNOS GROVE

TOTTENHAM

CHINGFORD HATCH

WOODFORD GREEN

CHIGWELL ROW

hwood

PINNER GREEN

CANONS PARK

BURNT OAK

NEW SOUTHGATE

WOOD GREEN

WOODFORD GREEN

WOODFORD

FAIRLOP

Pinner

KINGSBURY

COLINDALE

FINCHLEY

MUSWELL HILL

WOOD GREEN

WALTHAMSTOW

SOUTH WOODFORD

LITTLE HEATH

NORTH HARROW

Harrow

KINGSBURY

BRENT CROSS

ARCHWAY

FINSBURY PARK

STAMFORD HILL

WHIPPS CROSS

WANSTEAD

NEWBURY PARK

Chadwell Heath

EASTCOTE
RAYNERS LANE

ROXETH
SOUTH HARROW

Wembley

NEASDEN

CRICKLEWOOD

ARCHWAY

FINSBURY PARK

STAMFORD HILL

WHIPPS CROSS

WANSTEAD

NEWBURY PARK

SEVEN KINGS

ON

Northolt

Horsenden

Wembley

WILLESDEN

HARLESDEN

CAMDEN TOWN

ISLINGTON

HACKNEY CENTRAL
HACKNEY

STRATFORD

LOXFORD

Dagenham

Greenford Perivale

Wembley

WILLESDEN

HARLESDEN

CAMDEN TOWN

ISLINGTON

HACKNEY CENTRAL
HACKNEY

STRATFORD

LOXFORD

Dagenham

Southall

HANWELL

EALING

ACTON

WHITE CITY

NOTTING HILL

MARYLEBONE

SOHO

WHITECHAPEL

POPLAR

PLAISTOW

Barking

Dagenham

SOUTHALL GREEN

HESTON

OSTERLEY

Brentford

CRISWICK

HAMMERSMITH

FULHAM

BATTERSEA

WESTMINSTER

LAMBETH

SOUTHWARK

SURREY QUAYS

GREENWICH

ROYAL ARSENAL
WOOLWICH

THAMESMEAD

Belvedere

London

FOR MORE INFORMATION
ON LEASING CONTACT

PILCHER ● LONDON

SIMON RINDER

SIMONRINDER@PILCHER.LONDON

020 7399 8600 (OFFICE)

077 3448 8286 (MOBILE)

Stimpsons

GRAHAM PAYNE

GRAHAM.PAYNE@STIMPSONS.CO.UK

019 2325 2188 (OFFICE)

078 0109 8096 (MOBILE)

AGENTS	PILCHER LONDON
ARCHITECTS	dMK
CONSTRUCTION	BLOOM
DESIGN	POST